

# Next symposium – AAC 2016

The event in Sweden

Lars Eriksson

Division of Vehicular Systems

Department of Electrical Engineering

Linköping University

# AAC 2016

- Placement in Sweden  
under supervision of Lars Eriksson – Decided
- Venue and dates – Not yet decided
- My Guesstimate
  - Kolmården Wildlife Resort
    - All participants in one place
  - June 19-23, 2016
    - At solstice before Swedish midsummer celebration
    - 19, Sunday – Welcome reception
    - 20-23, Mon-Wed – Symposium
- Feedback on dates and venue

# Sweden and the venue



- Four star hotel – Resort
  - 210 rooms and 420 guests
  - Largest auditorium 400 audience
  - Other rooms: 130, 80, 60, 50, 50...
- Large spaces for meeting and discussing
- All in one place no logistics or transport
  - Arrange traveling there and away...



# KOLMÄRDENS DJURPARK & VILDMARKSHOTELLET

## KONFERENSFAKTA



Vi har lång erfarenhet av att få alla slags konferenser att flyta smidigt. Våra konferenslokaler, liksom våra grupprum, är modernt och ändamålsenligt nyrenoverade. De flesta har dessutom alldeles underbar utsikt över Bråviken.

### KONFERENSLOKALER

På Vildmarkshotellet finns 5 konferensvåningar med 20 konferenslokaler, 4-400 personer. I djurparken finns allt från små lokaler till Dellinarium med plats för 1 800 personer.

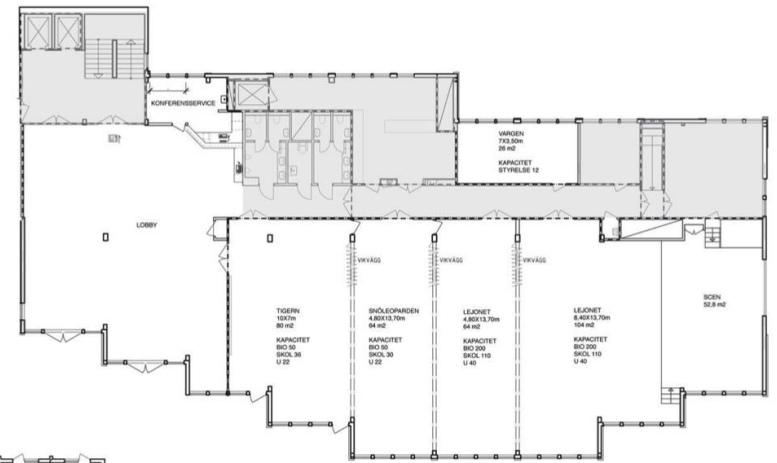
Gästkapacitet konferenslokaler:

Namn	Bio	Skol	U	Styrelse	Runda bord
Tigern	50	56	22	-	-
Snöleoparden	50	50	22	-	-
Lejonet	200	110	40	-	9 x 10 pers
Tigern + Snöleoparden	110	80	40	-	6 x 10 pers
Snöleoparden + Lejonet	280	150	-	-	12 x 10 pers
Tigern + Snöleoparden + Lejonet	400	220	-	-	18 x 10 pers
Vargen	-	-	-	12	-
Delfinen	-	-	-	14	-
Giraffen	50	40	24	-	-
Noshörningen	-	-	-	8	-
Gnun	-	-	-	8	-
Antilopen	50	22	14	12	-
Sebraan	-	-	-	8	-
Elefanten	130	90	56	-	-
Gorillan	80	56	26	-	-
Schimpansean	60	48	26	-	-
Sälen	-	-	-	8	-
Tapiren	-	-	-	8	-
Kamelen	-	-	-	8	-
Surikaten	25	20	14	12	-
Dellincenter	50	50	20	12	-

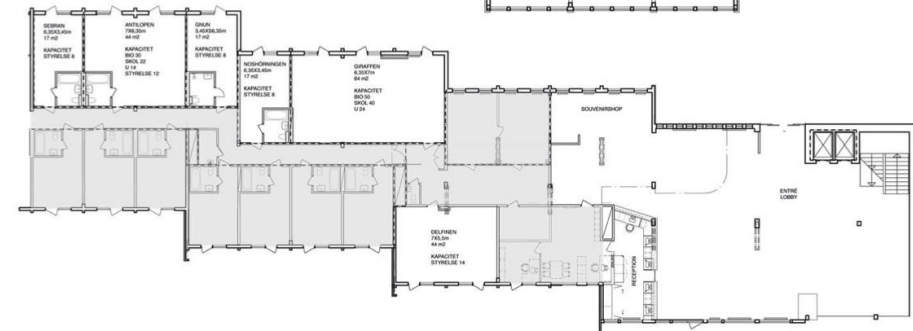
### MAT & DRICK

Restaurang Marrakech, 500 pers  
 Club Zanzibar, 150 pers  
 Festvåning, 300 pers  
 Restaurang Safari, 400 pers, varav 250 inomhus

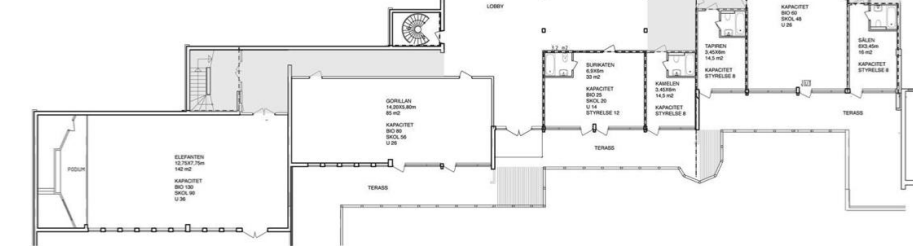
För mer information, besök [kolmarden.com](http://kolmarden.com) eller ring 010-708 70 00.



PLAN 3



PLAN 1



# Organization of the conference

## International Program Committee

- Chair: TBD
- Co-chair: TBD
- Co-chair: TBD
  
- Spread among countries

## National Organization Committee

- Chair: Lars Eriksson
- Co-chair:
  
- Secured support from a senior organizer from LiU

Strong support and can start to populate the positions...

# Formalities, papers, editorial system, etc

- Starting the formal procedures with IFAC
  - Follow IFAC Organizers' Guide
- Select deadlines to match other conferences
  - Feedback from TC members
- Papers and reviews – Paper Plaza
- Hope to produce yet another successful AAC